



HK

HONG KONG

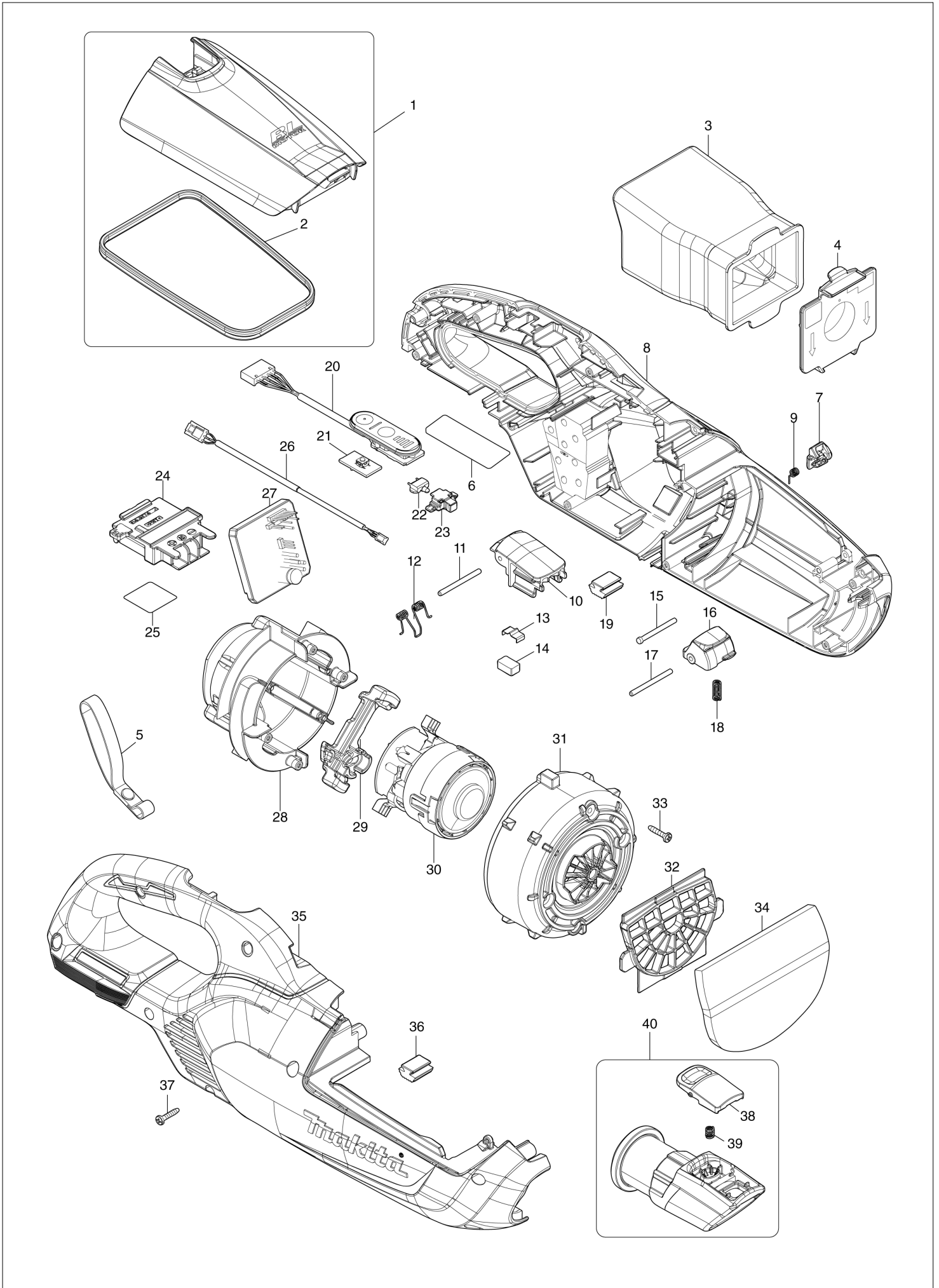
Diagram / Parts List

DCL285F

CORDLESS CLEANER



(HK) DCL285F / CORDLESS CLEANER



HK

HONG KONG

DCL285F / CORDLESS CLEANER

Item	Sub	Parts No.	Parts Description	Qty	I/C	E/C No.	Close No.	Remark
001W		136908-3	FRONT COVER ASSEMBLY	1				
001X		136908-3	FRONT COVER ASSEMBLY	1				
001Y		136906-7	FRONT COVER ASSEMBLY	1				
001Z		136906-7	FRONT COVER ASSEMBLY	1				
	D10		INC. 2					
002		424093-7	SEAL	1				
003		1910M4-5	HIGH PERFORMANCE DUST BAG SET	1				
004		140K23-3	VALVE STAY COMPLETE	1				
005		163400-6	HANDSTRAP	1				
006		8588J6-8	DCL285F NAME PLATE	1				
007W		459302-5	STOPPER PLATE	1				
007X		459302-5	STOPPER PLATE	1				
007Y		459327-9	STOPPER PLATE	1				
007Z		459327-9	STOPPER PLATE	1				
008W		183Y70-5	HOUSING SET	1				
008X		183Y70-5	HOUSING SET	1				
008Y		183Y53-5	HOUSING SET	1				
008Z		183Y53-5	HOUSING SET	1				
	C10	263005-3	RUBBER PIN 6	2				
	C20	422974-9	SPONGE SHEET	2				
	D10		INC. 19,35,36					
009		232484-6	TORSION SPRING 4	1				
010W		459351-2	FRONT COVER JOINT	1				
010X		459351-2	FRONT COVER JOINT	1				
010Y		459330-0	FRONT COVER JOINT	1				
010Z		459330-0	FRONT COVER JOINT	1				
011		268271-7	PIN 3	1				
012		233580-3	TORSION SPRING 4	1				
013		232264-0	LEAF SPRING	1				
014		424367-6	RUBBER	1				
015		256590-3	FLAT FILLISTER HD. PIN 3	1				
016W		459349-9	BUTTON B	1				
016X		459349-9	BUTTON B	1				
016Y		459329-5	BUTTON B	1				
016Z		459329-5	BUTTON B	1				
017		268271-7	PIN 3	1				
018		233344-5	COMPRESSION SPRING 4	1				
019		422460-0	RUBBER PLATE	1				
020		141B54-1	INDICATION CIRCUIT COMPLETE	1				
021		620E74-1	SWITCH UNIT	1				
022		620E82-2	LED CIRCUIT	1				
023		141H09-2	LED CASE COMPLETE	1				
024		643874-2	TERMINAL	1				
025		8588K4-9	DCL285F SERIAL NO. LABEL	1				
026		632S32-9	LEAD UNIT	1				
027		620L20-6	CONTROLLER	1				
	C10	688163-8	LINE FILTER	1				
028		141E55-7	MOTOR COVER R COMPLETE	1				
	C10	263002-9	RUBBER PIN 4	4				
029		422723-4	MOTOR COVER SEAL	1				
030		629B87-1	MOTOR ASSEMBLY	1				
031		413645-9	MOTOR COVER F	1				
032		413J77-0	GUARD	1				
033		266429-2	TAPPING SCREW 3X16	4				
034		424804-0	SPONGE SHEET 76-110	1				
035W		183Y70-5	HOUSING SET	1				
035X		183Y70-5	HOUSING SET	1				
035Y		183Y53-5	HOUSING SET	1				
035Z		183Y53-5	HOUSING SET	1				
	C10	263005-3	RUBBER PIN 6	2				
	C20	422974-9	SPONGE SHEET	2				
	D10		INC. 8,19,36					
036		422460-0	RUBBER PLATE	1				
037		266429-2	TAPPING SCREW 3X16	9				
038		413F33-6	BUTTON C	1				

W:DCL285FRAB(H)
X:DCL285FZB(N)
Y:DCL285FRAW(H)
Z:DCL285FZW(N)

Interchange

O : Yes

X : No

< : the new part can be substituted for the current.

> : the current part can be substituted for the new.

S : Interchangeable as a set.

