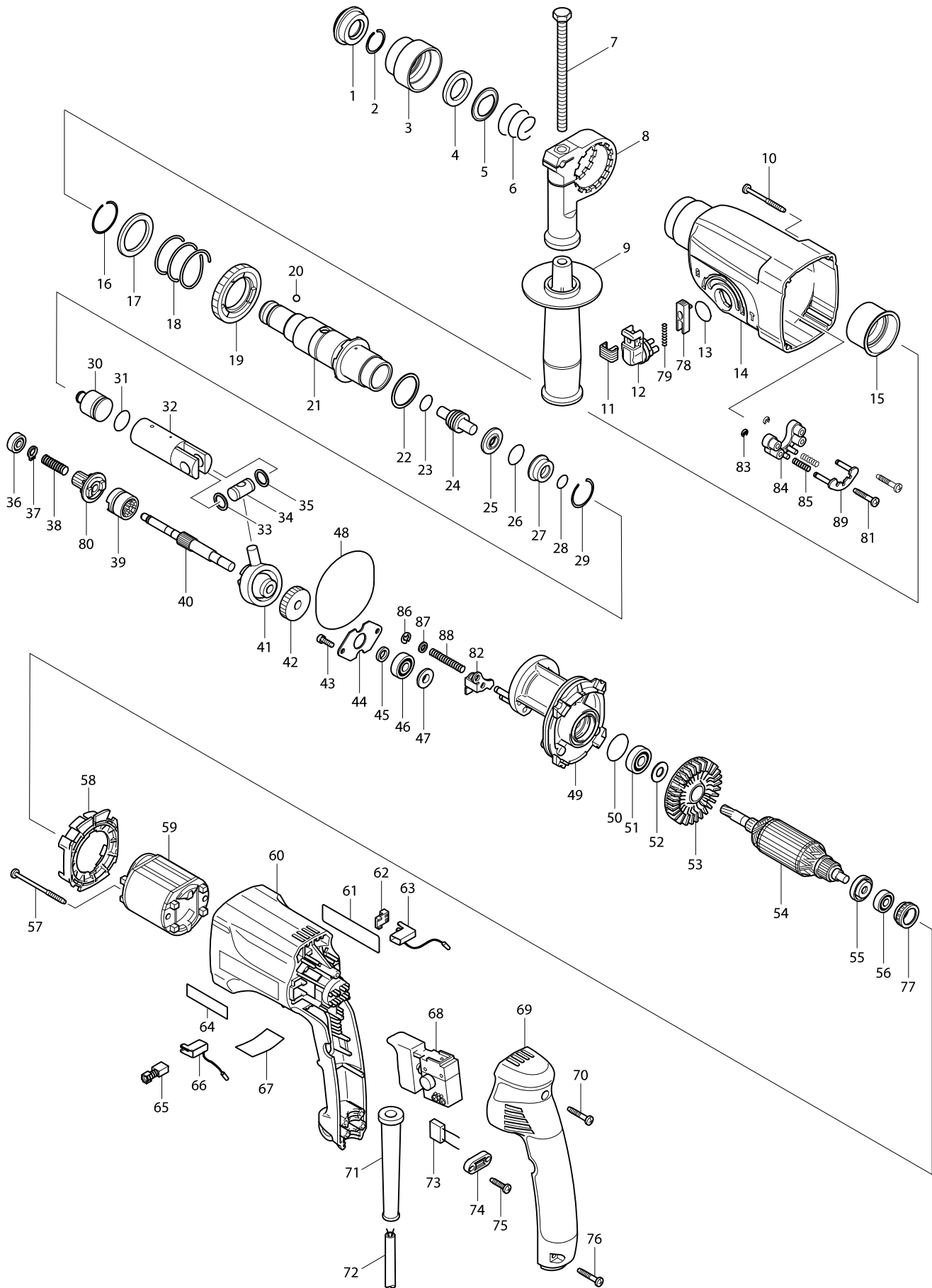


Model No. HR2452 ROTARY HAMMER 24MM



Model No. HR2452 ROTARY HAMMER 24MM

Item	Parts No.	Description	I/C	Qty	N/O	Sales	Purch.	Note
001	286263-4	CAP 35		1				
002	233915-8	RING SPRING 19		1	*			
002-1	233940-9	RING SPRING 19	O	1				
003	417629-9	CHUCK COVER		1				
004	257241-1	RING 21		1				
005	345187-4	GUIDE WASHER		1				
006	233916-6	CONICAL COMP. SPRING 21-29		1				
007	921923-8	HEX. BOLT M8X120		1				
008-1	417630-4	GRIP BASE		1				
009-2	134943-5	GRIP 36 ASS'Y		1	*			
C10	152521-9	GRIP 36 COMPLETE		1	*			
D10		INC. 7,8,90			*			
009-3	135302-6	GRIP 36 ASS'Y	O	1				
C10	153503-4	GRIP 36 COMPLETE		1				
D10		INC. 7,8,90						
010	266069-6	TAPPING SCREW 4X45		4	*			
010-1	266425-0	TAPPING SCREW 4X45	O	4				
011	417794-4	CAP		1				
012	162229-7	CHANGE LEVER COMPLETE		1				
013	213278-8	O RING 17		1				
014	183441-6	GEAR HOUSING SET		1				
D10		INC. 15						
015	153290-5	NEEDLE BEARING COMPLETE		1				
016	233918-2	RING SPRING 28		1				
017	267228-5	WASHER 30		1				
018	233328-3	COMPRESSION SPRING 31		1				
019	227028-5	SPUR GEAR 51		1				
020	216022-2	STEEL BALL 7.0		1				
021	153365-0	TOOL HOLDER COMPLETE		1				
022	267229-3	FLAT WASHER 28		1				
023	213128-7	O RING 12		1				
024	324278-4	IMPACT BOLT		1	*			
024-1	324396-8	IMPACT BOLT	<	1				
025	324218-2	RING 9		1				
026	213232-2	O RING 15		1				
027	324216-6	O RING CASE		1				
028	213073-6	O RING 9		1				
029	233917-4	RING SPRING 28		1				
030	324214-0	STRIKER		1				
031	213227-5	O RING 16		1				
032-1	331632-5	PISTON CYLINDER		1				
033	267104-3	FLAT WASHER 12		1				
034	324215-8	PISTON JOINT		1				
035	267104-3	FLAT WASHER 12		1				
036	211012-0	BALL BEARING 606ZZ		1	*			
036-1	210028-2	BALL BEARING 606ZZ	O	1				
037	961003-8	RETAINING RING S-7		1				
038	233343-7	COMPRESSION SPRING 7		1				

Model No. HR2452 ROTARY HAMMER 24MM

Item	Parts No.	Description	I/C	Qty	N/O	Sales	Purch.	Note
039	331634-1	CLUTCH CAM		1	*			
039-1	331993-3	CLUTCH CAM	<	1				
040	324248-3	CAM SHAFT		1				
041	219014-0	SWASH BEARING 10		1				
042	226550-9	HELICAL GEAR 26		1				
043	266273-7	HEX. SOCKET HEAD BOLT M4X12		2				
044	345179-3	BEARING RETAINER		1				
045	267234-0	FLAT WASHER 8		1				
046	211032-4	BALL BEARING 608ZZ		1	*			
046-1	210029-0	BALL BEARING 608ZZ	O	1				
047	324212-4	RING 8		1				
048	213725-9	O RING 68		1				
049	153367-6	INNER HOUSING COMPLETE		1	*			
049-1	153610-3	INNER HOUSING COMPLETE	<	1	*			
049-2	153687-8	INNER HOUSING COMPLETE	<	1				
050	213380-7	O RING 24		1				
051	210060-6	BALL BEARING 609LLU		1				
052	267231-6	FLAT WASHER 9		1				
053	240047-4	FAN 60		1	*			
053-1	240084-8	FAN 60	O	1				
D10		INC. 51,52,53,55,56			*			
054A	518854-6	ARMATURE ASS'Y 220V		1	*			
054B	517375-5	ARMATURE ASS'Y 115V		1	*			
D10		INC. 51,52,53,55,56						
054-1A	518878-2	ARMATURE ASS'Y 220V	O	1				
054-1B	515661-8	ARMATURE ASS'Y 115V	O	1				
055	681636-0	INSULATION WASHER		1				
056	211021-9	BALL BEARING 607LLB		1				
057	266052-3	TAPPING SCREW 4X60		2	*			
057-1	266334-3	TAPPING SCREW 4X60	O	2				
058	417631-2	BAFFLE PLATE		1	*			
058-1	419201-3	BAFFLE PLATE	O	1				
059A	633493-2	FIELD 220V		1				
059B	633485-1	FIELD 100-115V		1				
060	183409-2	MOTOR HOUSING		1	*			
D10		INC. 64			*			
060-1	183951-3	MOTOR HOUSING SET	O	1	*			
D10		INC. 64			*			
060-2	418084-8	MOTOR HOUSING	O	1				
061	853824-1	NAME PLATE HR2452		1				
062	689111-0	SPACER		2				
063	643991-8	BRUSH HOLDER		1				
064	819063-3	MAKITA LABEL		1	*			
065	191962-4	CARBON BRUSH CB-419		1				
066	643992-6	BRUSH HOLDER		1				
067	815951-2	HR2452 SERIAL NUMBER LABEL		1	*			
067-1	815989-7	HR2452 SERIAL NUMBER LABEL	X	1				
068	651358-6	SWITCH TG813TB-2		1				

Model No. HR2452 ROTARY HAMMER 24MM

Item	Parts No.	Description	I/C	Qty	N/O	Sales	Purch.	Note
069	153284-0	HANDLE COVER COMPLETE		1				
C10	263002-9	RUBBER PIN 4		2				
070	265999-8	TAPPING SCREW 4X25		1	*			
070-1	266374-1	TAPPING SCREW 4X25	O	1				
071A	682566-8	CORD GUARD 10		1				
071B	682559-5	CORD GUARD 8		1				
072A	692527-0	POWER SUPPLY CORD 1.0-2-2.5		1				
072B	664013-1	POWER SUPPLY CORD AWG#18-2-2.5		1				
074A	687052-4	STRAIN RELIEF		1	*			
074B	687063-9	CORD CLAMP		1	*			
074-1A	687124-5	STRAIN RELIEF	O	1				
074-1B	687123-7	STRAIN RELIEF	O	1				
075	265995-6	TAPPING SCREW 4X18		2	*			
075-1	266326-2	TAPPING SCREW 4X18	O	2				
076	265999-8	TAPPING SCREW 4X25		2	*			
076-1	266374-1	TAPPING SCREW 4X25	O	2				
077	421494-0	RUBBER RING 19		1				
078	417795-2	LOCK BUTTON		1				
079	233341-1	COMPRESSION SPRING 3		1				
080	226399-7	SPUR GEAR 10		1				
081	265999-8	TAPPING SCREW 4X25		2	*			
081-1	266374-1	TAPPING SCREW 4X25	O	2				
082	345220-2	CHANGE PLATE		1	*			
082-1	345363-0	CHANGE PLATE	S	1				
083	961017-7	STOP RING E-3		2				
084	417796-0	GUIDE BASE		1				
085	233344-5	COMPRESSION SPRING 4		2				
086	961011-9	STOP RING E-4		1				
087	941102-2	FLAT WASHER 5		1				
088	233342-9	COMPRESSION SPRING 6		1				
089	163430-7	LOCK PLATE COMPLETE		1				
090	345280-4	HEX. WASHER		1				
091	267271-4	FLAT WASHER 9		1				
A01	324219-0	DEPTH GAUGE		1				
A02	824650-5	PLASTIC CARRYING CASE		1				
C10	417724-5	LATCH		2				
C20	819144-3	MAKITA LOGO LABEL		1				

Please order the parts with a part number.