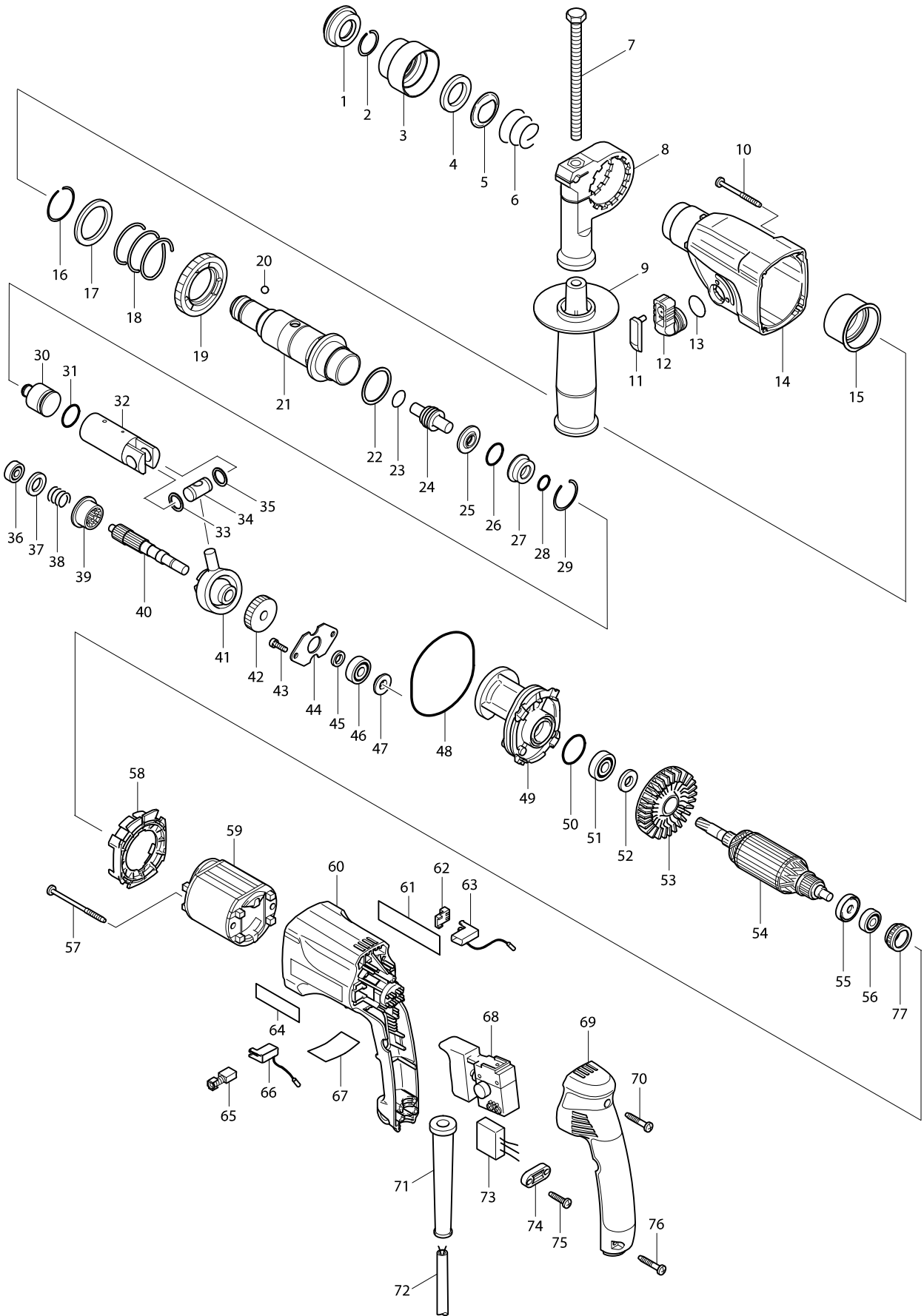


# Model No. HR2442 ROTARY HAMMER 24MM



# Model No. HR2442 ROTARY HAMMER 24MM

Item	Parts No.	Description	I/C	Qty	N/O	Sales	Purch.	Note
001	286263-4	CAP 35		1				
002	233915-8	RING SPRING 19		1	*			
002-1	233940-9	RING SPRING 19	O	1				
003	417629-9	CHUCK COVER		1				
004	257241-1	RING 21		1				
005	345187-4	GUIDE WASHER		1				
006	233916-6	CONICAL COMP. SPRING 21-29		1				
007	921923-8	HEX. BOLT M8X120		1				
008-1	417630-4	GRIP BASE		1				
009-1	134943-5	GRIP 36 ASS'Y		1	*			
C10	152521-9	GRIP 36 COMPLETE		1	*			
D10		INC. 7,8,78			*			
009-2	135302-6	GRIP 36 ASS'Y	O	1				
C10	153503-4	GRIP 36 COMPLETE		1				
D10		INC. 7,8,78						
010	266069-6	TAPPING SCREW 4X45		4	*			
010-1	266425-0	TAPPING SCREW 4X45	O	4				
011	417628-1	CAP		1				
012	153289-0	CHANGE LEVER COMPLETE		1	*			
012-1	184678-8	CHANGE LEVER ASS'Y	<	1				
C10	153289-0	CHANGE LEVER COMPLETE		1				
D10		INC. 11,39						
013	213278-8	O RING 17		1				
014	183442-4	GEAR HOUSING SET		1				
C10	213535-4	OIL SEAL 25		1				
D10		INC. 15						
015	153290-5	NEEDLE BEARING COMPLETE		1				
016	233918-2	RING SPRING 28		1				
017	267228-5	WASHER 30		1				
018	233328-3	COMPRESSION SPRING 31		1				
019	227019-6	SPUR GEAR 51		1				
020	216022-2	STEEL BALL 7.0		1				
021	153288-2	TOOL HOLDER COMPLETE		1				
022	267229-3	FLAT WASHER 28		1				
023	213128-7	O RING 12		1				
024-1	324278-4	IMPACT BOLT		1				
025	324218-2	RING 9		1				
026	213232-2	O RING 15		1				
027	324216-6	O RING CASE		1				
028	213073-6	O RING 9		1				
029	233917-4	RING SPRING 28		1				
030	324214-0	STRIKER		1				
031	213227-5	O RING 16		1				
032	317517-9	PISTON CYLINDER		1				
033	267104-3	FLAT WASHER 12		1				
034	324215-8	PISTON JOINT		1				
035	267104-3	FLAT WASHER 12		1				
036	211012-0	BALL BEARING 606ZZ		1	*			

# Model No. HR2442 ROTARY HAMMER 24MM

Item	Parts No.	Description	I/C	Qty	N/O	Sales	Purch.	Note
036-1	210028-2	BALL BEARING 606ZZ	O	1				
037	253744-3	FLAT WASHER 12		1				
038	233347-9	COMPRESSION SPRING 12		1				
039	324152-6	CLUTCH CAM		1	*			
039-1	324469-7	CLUTCH CAM	<	1				
040	227029-3	SPUR GEAR 10		1				
041	219014-0	SWASH BEARING 10		1				
042	226550-9	HELICAL GEAR 26		1				
043	266273-7	HEX. SOCKET HEAD BOLT M4X12		2				
044	345179-3	BEARING RETAINER		1				
045	267234-0	FLAT WASHER 8		1				
046	211032-4	BALL BEARING 608ZZ		1	*			
046-1	210029-0	BALL BEARING 608ZZ	O	1				
047	324212-4	RING 8		1				
048	213725-9	O RING 68		1				
049	153287-4	INNER HOUSING COMPLETE		1	*			
049-1	153611-1	INNER HOUSING COMPLETE	<	1	*			
049-2	153686-0	INNER HOUSING COMPLETE	<	1				
050	213380-7	O RING 24		1				
051	210060-6	BALL BEARING 609LLU		1				
052	267231-6	FLAT WASHER 9		1				
053	240047-4	FAN 60		1	*			
053-1	240084-8	FAN 60	O	1				
D10		INC. 51,52,53,55,56			*			
054A	518854-6	ARMATURE ASS'Y 220V		1	*			
054B	517375-5	ARMATURE ASS'Y 115V		1	*			
D10		INC. 51,52,53,55,56						
054-1A	518878-2	ARMATURE ASS'Y 220V	O	1				
054-1B	515661-8	ARMATURE ASS'Y 115V	O	1				
055	681636-0	INSULATION WASHER		1				
056	211021-9	BALL BEARING 607LLB		1				
057	266052-3	TAPPING SCREW 4X60		2	*			
057-1	266334-3	TAPPING SCREW 4X60	O	2				
058	417631-2	BAFFLE PLATE		1	*			
058-1	419201-3	BAFFLE PLATE	O	1				
059A	633493-2	FIELD 220V		1				
059B	633485-1	FIELD 100-115V		1				
060	183409-2	MOTOR HOUSING		1	*			
D10		INC. 64			*			
060-1	183951-3	MOTOR HOUSING SET	O	1	*			
D10		INC. 64			*			
060-2	418084-8	MOTOR HOUSING	O	1				
061	853558-6	NAME PLATE HR2442		1				
062	689111-0	SPACER		2				
063	643992-6	BRUSH HOLDER		1				
064	819063-3	MAKITA LABEL		1	*			
065	191962-4	CARBON BRUSH CB-419		1				
066	643991-8	BRUSH HOLDER		1				

