



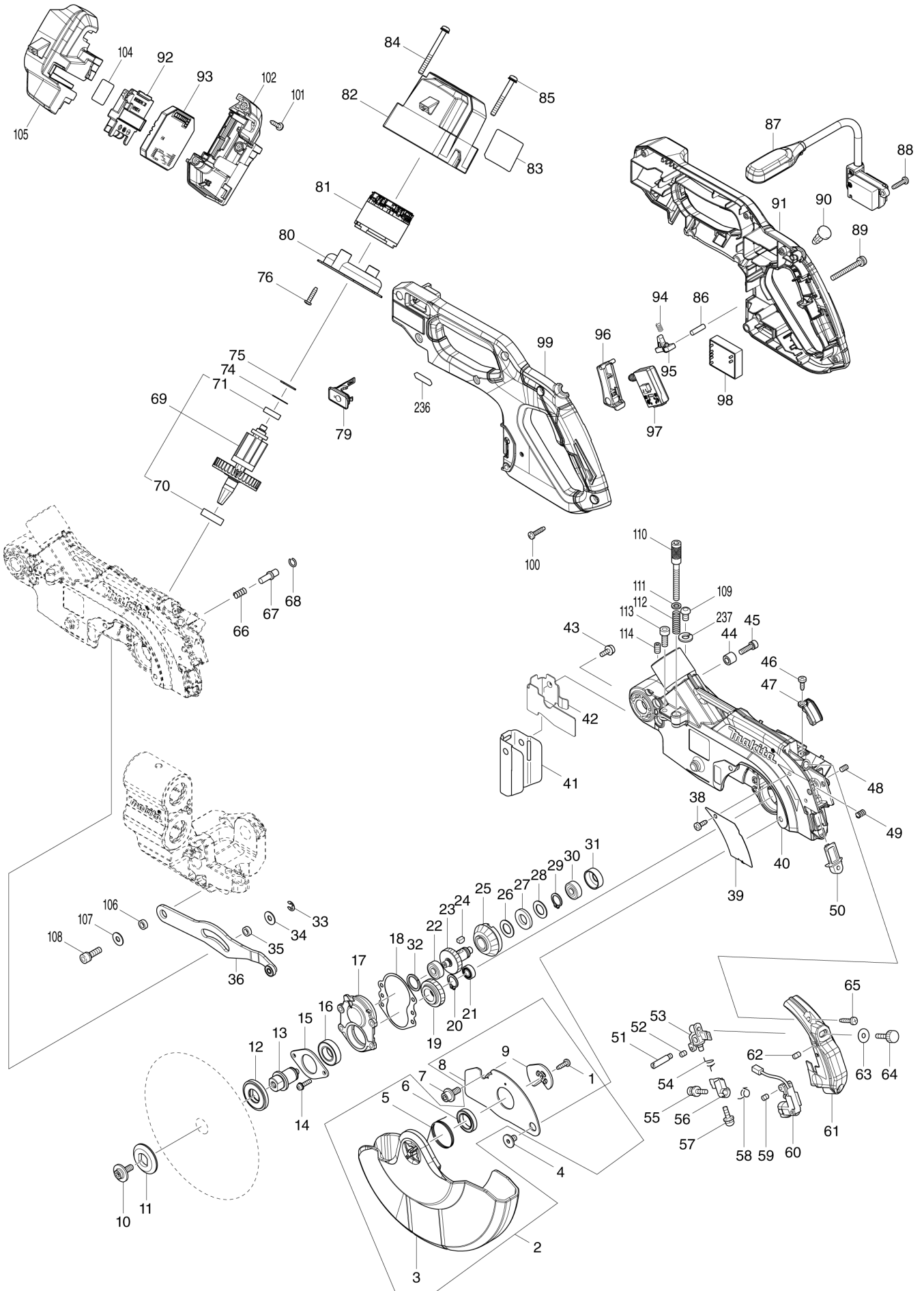
MO	
----	--

Diagram / Parts List

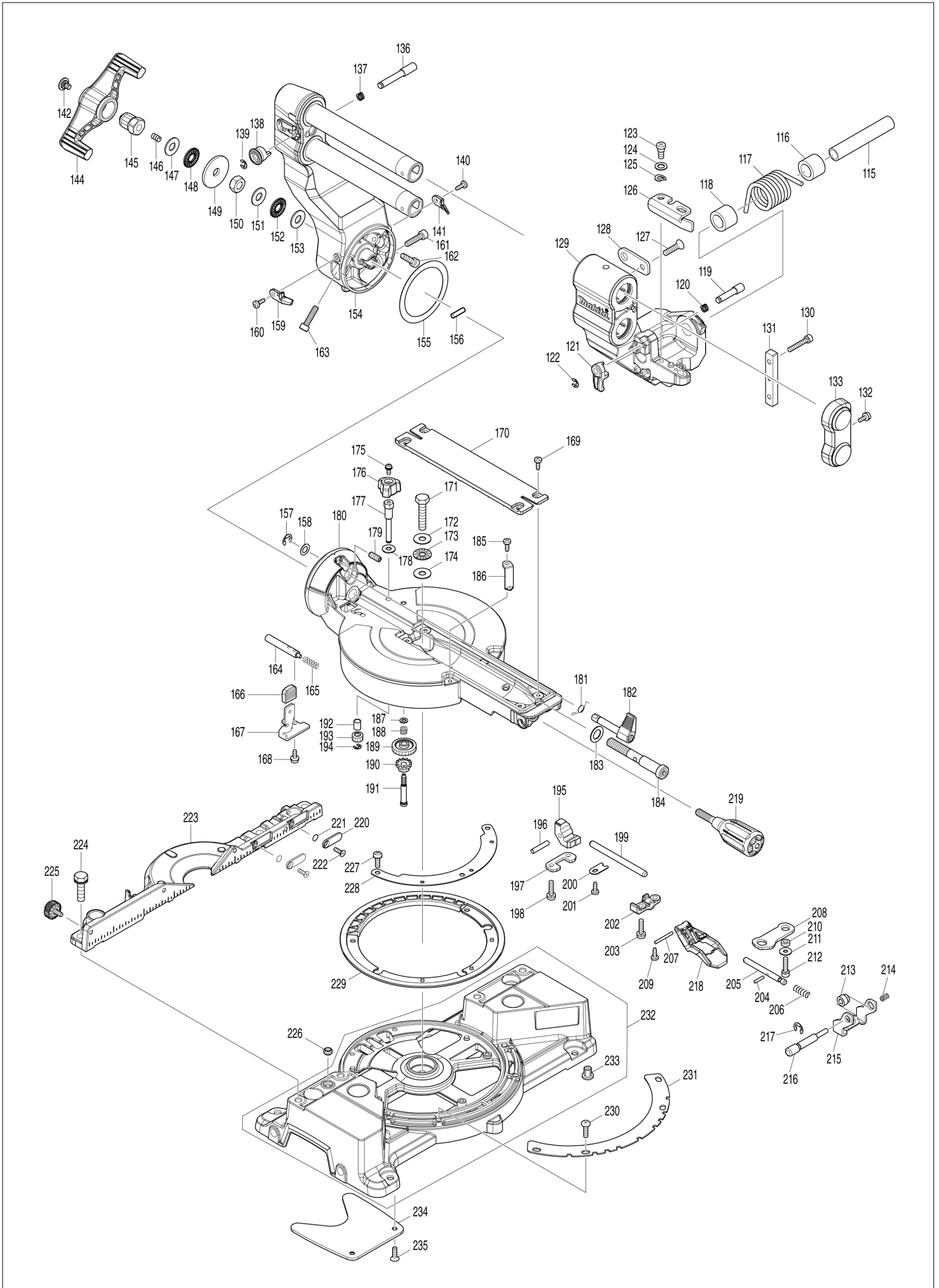
LS001G

165MM DC SLIDE CPD. MITER SAW

(MO) LS001G / 165MM DC SLIDE CPD. MITER SAW



(MO) LS001G / 165MM DC SLIDE CPD. MITER SAW



MO

LS001G / 165MM DC SLIDE CPD. MITER SAW

Item	Sub	Parts No.	Parts Description	Qty	I/C	E/C No.	Close No.	Remark
001		266192-7	TAPPING SCREW 4X14	1				
002		136207-3	SAFETY COVER ASSY	1				
	D10		INC. 1,3,5,6,8,9					
003		459734-6	SAFETY COVER	1				
004		265985-9	HEX.SOCKET HEAD BOLT M6	1				
005		232311-7	TORSION SPRING 30	1				
006		210150-5	BALL BEARING 6803DDW	1				
007		266732-1	HEX. SOCKET HEAD BOLT M6X16	1				
008		347731-3	CENTER COVER	1				
009		347059-9	CENTER PLATE	1				
010		266733-9	HEX. S.F.H. BOLT M6X16	1				
011		224409-4	OUTER FLANGE 35	1				
012		224593-5	INNER FLANGE 35	1				
013		327451-5	SPINDLE	1				
014		911128-8	P.H.SCREW M4X16 WITH WR	4				
015		285037-0	BEARING RETAINER 46	1				
016		211239-2	BALL BEARING 6902DDW	1				
017		319888-0	BEARING BOX	1				
018		442152-5	GASKET	1				
019		226948-0	HELICAL GEAR 39	1				
020		961055-9	RETAINING RING S-15	1				
021		210006-2	BALL BEARING 696ZZ	1				
022		211021-9	BALL BEARING 607LLB	1				
023		226949-8	HELICAL GEAR 31	1				
024		254011-9	WOODRUFF KEY 4	1				
025		226945-6	SPIRAL BEVEL GEAR 41	1				
026		253744-3	FLAT WASHER 12	1				
027		261104-5	RUBBER WASHER 12	1				
028		253744-3	FLAT WASHER 12	1				
029		961052-5	RETAINING RING S-12	1				
030		211021-9	BALL BEARING 607LLB	1				
031		424605-6	RUBBER RING 19	1				
032		261153-2	URETHAN WASHER 15	1				
033		961018-5	STOP RING E-5	1				
034		253804-1	FLAT WASHER 6	1				
035		257163-5	RING 6	1				
036		140P43-7	LINK PLATE COMPLETE	1				
038		266026-4	TAPPING SCREW BIND CT 4X12	1				
039		347730-5	COVER PLATE	1				
040		140V48-3	BLADE CASE COMPLETE	1				
	C10	263002-9	RUBBER PIN 4	3				
	C20	263005-3	RUBBER PIN 6	1				
	C30	322316-6	LINK SHAFT	1				
041		424045-8	GUARD	1				
042		345438-5	GUARD PLATE	1				
043		911113-1	PAN HEAD SCREW M4X10 WITH WR	1				
044		257955-2	SLEEVE 5	1				
045		922226-3	HEX. SOCKET HEAD BOLT M5X18	1				
046		266026-4	TAPPING SCREW BIND CT 4X12	1				
047		458075-7	LEAD COVER	1				
048		266229-0	H.S.SET SCREW(CUP POINT)M5X8	1				
049		233471-8	COMPRESSION SPRING 6	1				
050		418104-8	LENS	1				
051		266306-8	SHOULDER SCREW M5	1				
052		266318-1	H.S.SET SCREW(FLAT POINT)M4X6	1				
053		419379-2	BLOCK C	1				
054		231664-1	TORSION SPRING 9	1				
055		911003-8	PAN HEAD SCREW M3X6	1				
056		419378-4	BLOCK B	1				
057		911003-8	PAN HEAD SCREW M3X6	1				
058		231664-1	TORSION SPRING 9	1				
059		266318-1	H.S.SET SCREW(FLAT POINT)M4X6	1				
060		638442-4	LASER CIRCUIT COMPLETE	1				
061		140344-7	LASER COVER COMPLETE	1				
	C10	810354-5	LASER BEAM LABEL	1				

Interchange
O : Yes
X : No
< : the new part can be substituted for the current.
> : the current part can be substituted for the new.
S : Interchangeable as a set.

MO

LS001G / 165MM DC SLIDE CPD. MITER SAW

Item	Sub	Parts No.	Parts Description	Qty	I/C	E/C No.	Close No.	Remark
062		266229-0	H.S.SET SCREW(CUP POINT)M5X8	1				
063		253807-5	FLAT WASHER 5	1				
064		265753-0	THUMB SCREW M5X24	1				
065		266042-6	TAPPING SCREW BIND CT 4X20	2				
066		231240-1	COMPRESSION SPRING 7	1				
067		256633-1	PIN 6	1				
068		231928-3	RING SPRING 8	1				
069		519588-4	ROTOR ASSY	1				
	D10		INC. 70,71					
070		211131-2	BALL BEARING 6001DDW	1				
071		210017-7	BALL BEARING 607DDW	1				
074		253842-3	FLAT WASHER 14	1				
075		261153-2	URETHAN WASHER 15	1				
076		265995-6	TAPPING SCREW 4X18	2				
079		140F99-0	CAP COMPLETE	1				
	C10	213218-6	O RING 16	1				
	C20	818H07-8	CAP LABEL	1				
080		459933-0	BAFFLE PLATE	1				
081		629452-2	STATOR	1				
082		459729-9	MOTOR HOUSING	1				
083		856M25-8	LS001G NAME PLATE	1				
084		911278-9	PAN HEAD SCREW M5X55	2				
085		911268-2	PAN HEAD SCREW M5X45	2				
086		256123-4	PIN 5	1				
087		620C28-6	LED CIRCUIT	1				
088		265995-6	TAPPING SCREW 4X18	2				
089		911268-2	PAN HEAD SCREW M5X45	1				
090		417113-4	SWITCH BUTTON	1				
091		183N43-2	HANDLE SET	1				
	D10		INC. 99					
092		632P64-8	TERMINAL UNIT	1				
093		620C27-8	CONTROLLER	1				
094		231026-3	COMPRESSION SPRING 4	1				
095		416533-9	LOCK OFF LEVER	1				
096		459966-5	SWITCH LEVER	1				
097		651083-9	SWITCH C3XA-1PSPM	1				
098		620C29-4	POWER SUPPLY CIRCUIT	1				
099		183N43-2	HANDLE SET	1				
	D10		INC. 91					
100		265995-6	TAPPING SCREW 4X18	6				
101		265995-6	TAPPING SCREW 4X18	3				
102		183N42-4	BATTERY HOUSING SET	1				
	C10	263005-3	RUBBER PIN 6	2				
	D10		INC. 105					
104		856M28-2	LS001G SERIAL NO. LABEL	1				
105		183N42-4	BATTERY HOUSING SET	1				
	C10	263005-3	RUBBER PIN 6	2				
	D10		INC. 102					
106		257163-5	RING 6	1				
107		253804-1	FLAT WASHER 6	1				
108		922331-6	HEX. SOCKET HEAD BOLT M6X20	1				
109		265B23-9	H.S. BUTTON HEAD BOLT M6X12	1				
110		265A93-2	HEX SCKET HEAD BOLT M6X50	1				
111		941152-7	FLAT WASHER 6	1				
112		233343-7	COMPRESSION SPRING 7	1				
113		266757-5	HEX. SOCKET HEAD BOLT M6X16	1				
114		251961-9	H.S.SET SCREW(FLAT POINT)M6X10	1				
115		331350-5	PIN 16-90	1				
116		416535-5	SLEEVE 17	1				
117		233520-1	TORSION SPRING 28	1				
118		416535-5	SLEEVE 17	1				
119		327450-7	LOCK PIN 7-9 A	1				
120		234316-3	COMPRESSION SPRING 7	1				
121		271457-4	LEVER 27	1				
122		961018-5	STOP RING E-5	1				

Interchange
O : Yes
X : No
< : the new part can be substituted for the current.
> : the current part can be substituted for the new.
S : Interchangeable as a set.

MO

LS001G / 165MM DC SLIDE CPD. MITER SAW

Item	Sub	Parts No.	Parts Description	Qty	I/C	E/C No.	Close No.	Remark
123		251267-5	+ PAN HEAD SCREW M6	1				
124		253215-0	FLAT WASHER 8	1				
125		253948-7	WAVE WASHER 8	1				
126		347736-3	STOPPER ARM	1				
127		265031-8	+ COUNTERSUNK HEAD SCREW M6X2	1				
128		347606-6	SLIDE LOCK PLATE	1				
129		127609-4	FRONT ARM ASSEMBLY	1				
	C10	263005-3	RUBBER PIN 6	2				
	C20	266026-4	TAPPING SCREW BIND CT 4X12	1				
	C30	347607-4	FRONT ARM PLATE	1				
130		922251-4	HEX. SOCKET HEAD BOLT M5X30	2				
131		327447-6	SQUARE ROD	1				
132		911113-1	PAN HEAD SCREW M4X10 WITH WR	1				
133		459929-1	HOLDER	1				
136		327449-2	LOCK PIN 7-9 B	1				
137		234316-3	COMPRESSION SPRING 7	1				
138		271428-1	KNOB 20	1				
139		961018-5	STOP RING E-5	1				
140		266026-4	TAPPING SCREW BIND CT 4X12	1				
141		459931-4	INDICATION PLATE R	1				
142		265985-9	HEX.SOCKET HEAD BOLT M6	1				
144		271458-2	LEVER 130	1				
145		252277-5	HEX. NUT M10-19	1				
146		231266-3	COMPRESSION SPRING 5	1				
147		253024-7	FLAT WASHER 10	1				
148		216413-7	THRUST NEEDLE CAGE 1024	1				
149		253388-9	FLAT WASHER 10	1				
150		252283-0	HEX. LOCK NUT M10-17	1				
151		253024-7	FLAT WASHER 10	1				
152		216413-7	THRUST NEEDLE CAGE 1024	1				
153		253024-7	FLAT WASHER 10	1				
154		140P71-2	ARM COMPLETE	1				
155		253456-8	FLAT WASHER 63	1				
156		256123-4	PIN 5	1				
157		961013-5	STOP RING E-7	1				
158		253215-0	FLAT WASHER 8	1				
159		459930-6	INDICATION PLATE L	1				
160		266026-4	TAPPING SCREW BIND CT 4X12	1				
161		251582-7	HEX SOCKET HEAD BOLT M6X25	1				
162		251582-7	HEX SOCKET HEAD BOLT M6X25	1				
163		251582-7	HEX SOCKET HEAD BOLT M6X25	1				
164		327446-8	STOPPER ROD 8	1				
165		233138-8	COMPRESSION SPRING 6	1				
166		286039-9	CAP	1				
167		347604-0	LEVER PLATE	1				
168		911113-1	PAN HEAD SCREW M4X10 WITH WR	2				
169		266026-4	TAPPING SCREW BIND CT 4X12	4				
170		459736-2	KERF BOARD	1				
171		265442-7	HEX. BOLT M8X40	1				
172		253731-2	FLAT WASHER 8	1				
173		216415-3	THRUST NEEDLE CAGE 821	1				
174		253731-2	FLAT WASHER 8	1				
175		911113-1	PAN HEAD SCREW M4X10 WITH WR	1				
176		271455-8	KNOB 28	1				
177		327458-1	SHAFT	1				
178		253804-1	FLAT WASHER 6	1				
179		265A80-1	H.S.SET SCREW(FLAT POINT)M6X16	1				
180		140P77-0	TURN BASE COMPLETE	1				
	C10	8002T1-8	BEVEL SCALE LABEL	1				
	C20	8002T2-6	OPERATIONAL INDICATION LABEL	1				
	C30	812X85-6	CAUTION LABEL	1				
181		232574-5	TORSION SPRING 8	1				
182		271456-6	LEVER 25	1				
183		253744-3	FLAT WASHER 12	1				
184		327448-4	CENTER SHAFT	1				

Interchange
O : Yes
X : No
< : the new part can be substituted for the current.
> : the current part can be substituted for the new.
S : Interchangeable as a set.

MO

LS001G / 165MM DC SLIDE CPD. MITER SAW

Item	Sub	Parts No.	Parts Description	Qty	I/C	E/C No.	Close No.	Remark
185		266026-4	TAPPING SCREW BIND CT 4X12	1				
186		459928-3	INDICATION PLATE	1				
187		267034-8	FLAT WASHER 5	1				
188		232584-2	COMPRESSION SPRING 6	1				
189		226947-2	SPUR GEAR 38	1				
190		226946-4	SPUR GEAR 14	1				
191		265A74-6	+ SHOULDER FLAT HEAD SCREW M5	1				
192		257600-9	SLEEVE 6	1				
193		226942-2	SPUR GEAR 15	1				
194		961011-9	STOP RING E-4	1				
195		310984-7	TURN STOPPER	1				
196		256186-0	PIN 5	1				
197		347601-6	STOPPER HOLDER	1				
198		911231-5	PAN HEAD SCREW M5X20	2				
199		327443-4	LOCK ROD	1				
200		347602-4	PLATE	1				
201		266026-4	TAPPING SCREW BIND CT 4X12	1				
202		319889-8	PIN HOLDER	1				
203		911231-5	PAN HEAD SCREW M5X20	2				
204		256254-9	PIN 3	1				
205		327444-2	LOCK PIN 6	1				
206		231325-3	COMPRESSION SPRING 6	1				
207		256267-0	PIN 3	1				
208		347619-7	LOCK PLATE B	1				
209		266026-4	TAPPING SCREW BIND CT 4X12	2				
210		257425-1	RING 5	2				
211		253194-2	FLAT WASHER 5	2				
212		922231-0	HEX. SOCKET HEAD BOLT M5X20	2				
213		257481-1	SLEEVE 5	1				
214		233471-8	COMPRESSION SPRING 6	1				
215		347603-2	LOCK PLATE A	1				
216		327445-0	SHOULDER PIN 8-10	1				
217		961013-5	STOP RING E-7	1				
218		459927-5	LOCK LEVER	1				
219		273024-1	GRIP 32	1				
220		346169-9	FENCE PLATE	2				
221		213021-5	O RING 5	2				
222		265156-8	+COUNTERSUNK HEAD SCREW M	2				
223		319899-5	GUIDE FENCE	1				
224		265488-3	HEX. BOLT M8X30	4				
225		265785-7	THUMB SCREW M5X10	1				
226		262162-4	URETHANE RING 5	1				
227		911223-4	PAN HEAD SCREW M5X16	3				
228		347599-7	MITER LOCK PLATE	1				
229		459735-4	SLIDE PLATE	1				
230		251546-1	+ PAN HEAD SCREW M5	4				
231		347600-8	MITER SCALE PLATE	1				
232		136193-8	BASE ASSY	1				
	C10	810486-8	CAUTION LABEL	1				
	C20	810064-4	LASER BEAM CAUTION LABEL	1				
	C30	813L22-1	CAUTION LABEL	2				
	D10		INC. 233					
233		286044-6	CAP 13	5				
234		144034-4	SUB PLATE COMPLETE	1				
235		912222-9	COUNTERSUNK HEAD SCREW M5X16	2				
236		8005T5-8	XGT LOGO LABEL	1				
237		942151-2	SPRING WASHER 6	1				
A01		127465-2	WISE ASSEMBLY	1				
A02		127512-9	DUST BAG ASSEMBLY	1				
	C10	412411-1	FASTENER	1				
A03		762001-3	TRIANGULAR RULE	1				
A04		783208-8	HEX. WRENCH 2.5	1				
A05		783022-2	HEX. WRENCH 5	1				
A06		B-69892	TCT BLADE165X20X60T EFFICUT	1				
						Interchange O : Yes X : No < : the new part can be substituted for the current. > : the current part can be substituted for the new. S : Interchangeable as a set.		