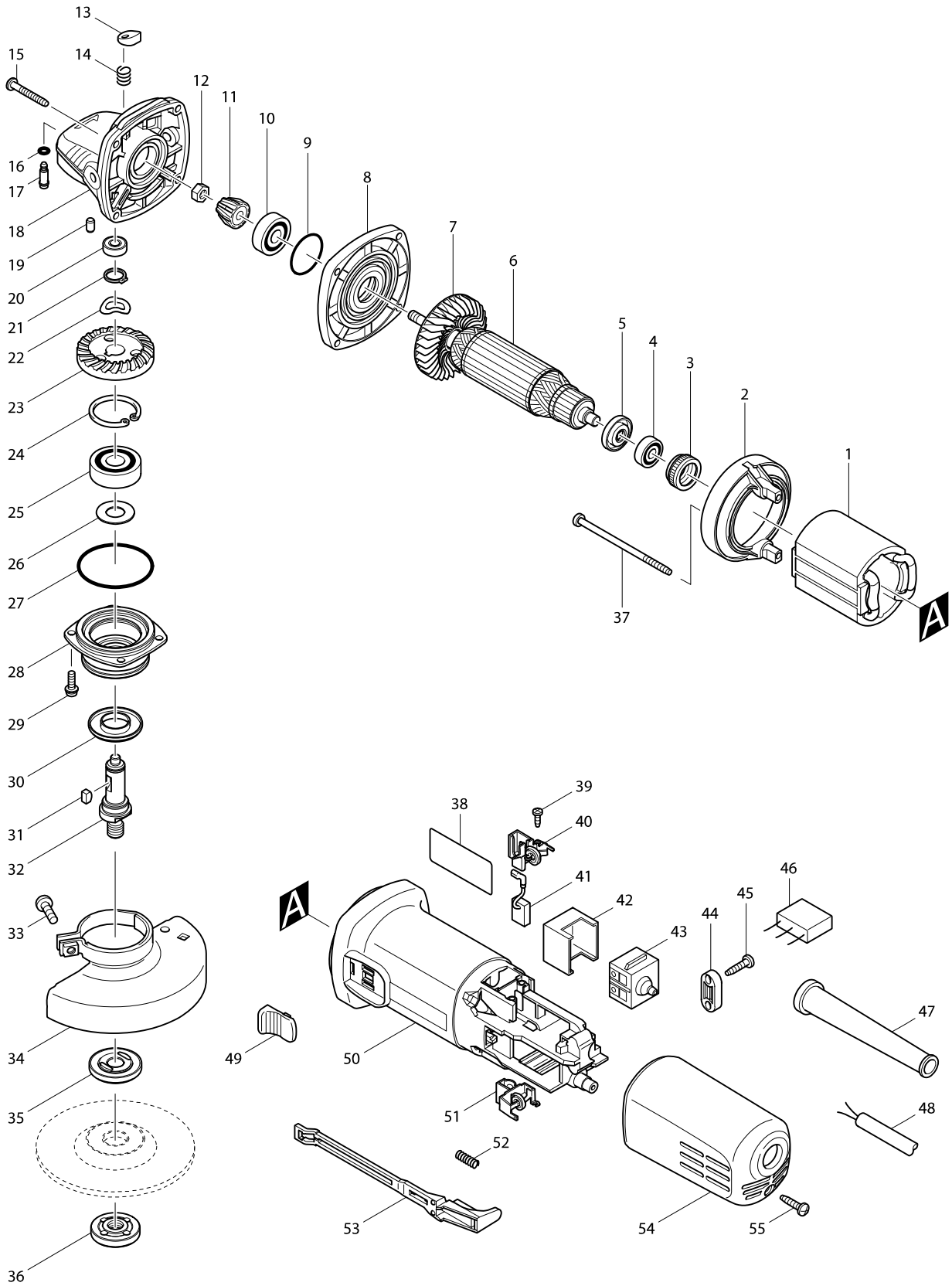


Model No. 9556NB 100MM ANGLE GRINDER



Model No. 9556NB 100MM ANGLE GRINDER

| Item | Parts No. | Description | I/C | Qty | N/O | Sales | Purch. | Note |
|-------|-----------|----------------------------|-----|-----|-----|-------|--------|------|
| 001 | 621708-9 | FIELD 220-240V | | 1 | | | | |
| 002 | 418770-1 | BAFFLE PLATE | | 1 | | | | |
| 003 | 421868-5 | LABYRINTH RUBBER RING 19 | | 1 | | | | |
| 004 | 210034-7 | BALL BEARING 607LLB | | 1 | | | | |
| 005 | 681667-9 | RESIN WASHER | | 1 | * | | | |
| 005-1 | 681636-0 | INSULATION WASHER | O | 1 | | | | |
| 006 | 518870-8 | ARMATURE ASS'Y 220-240V | | 1 | | | | |
| D10 | | INC. 4,5,7 | | | | | | |
| 007 | 240076-7 | FAN 56 | | 1 | | | | |
| 008 | 317821-6 | GEAR HOUSING COVER | | 1 | | | | |
| 009 | 213445-5 | O-RING 26 | | 1 | | | | |
| 010 | 210071-1 | BALL BEARING 629LLB | | 1 | * | | | |
| 010-1 | 210053-3 | BALL BEARING 629LLB | < | 1 | * | | | |
| 010-2 | 210042-8 | BALL BEARING 629LLB | O | 1 | | | | |
| 011 | 227464-5 | SPIRAL BEVEL GEAR 10 | | 1 | | | | |
| 012 | 252186-8 | HEX. NUT M6 | | 1 | | | | |
| 013 | 417771-6 | PIN CAP | | 1 | | | | |
| 014 | 233376-2 | COMPRESSION SPRING 8 | | 1 | | | | |
| 015 | 266361-0 | TAPPING SCREW 4X30 | | 4 | | | | |
| 016 | 213960-9 | O RING 5 | | 1 | | | | |
| 017 | 256486-8 | SHOULDER PIN 4 | | 1 | | | | |
| 018 | 317814-3 | GEAR HOUSING | | 1 | | | | |
| 019 | 263002-9 | RUBBER PIN 4 | | 1 | | | | |
| 020 | 210033-9 | BALL BEARING 696ZZ | | 1 | | | | |
| 021 | 961052-5 | RETAINING RING S-12 | | 1 | | | | |
| 022 | 267794-2 | WAVE WASHER 12 | | 1 | | | | |
| 023 | 227465-3 | SPIRAL BEVEL GEAR 37 | | 1 | * | | | |
| 023-1 | 227505-7 | SPIRAL BEVEL GEAR 37 | < | 1 | | | | |
| 024 | 962151-6 | RETAINING RING R-32 | | 1 | | | | |
| 025 | 211129-9 | BALL BEARING 6201DDW | | 1 | | | | |
| 026 | 267238-2 | FLAT WASHER 12 | | 1 | | | | |
| 027 | 213622-9 | O RING 45 | | 1 | | | | |
| 028 | 317819-3 | BEARING BOX | | 1 | | | | |
| 029 | 265099-4 | PAN HEAD SCREW M4X14 | | 4 | | | | |
| 030 | 345464-4 | LABYRINTH RING | | 1 | | | | |
| 031 | 254011-9 | WOODRUFF KEY 4 | | 1 | | | | |
| 032 | 324488-3 | SPINDLE | | 1 | | | | |
| 033 | 265103-9 | PAN HEAD SCREW M5X14 | | 1 | | | | |
| 034 | 125266-2 | WHEEL COVER ASS'Y | | 1 | | | | |
| D10 | | INC. 33 | | | | | | |
| 035 | 224314-5 | INNER FLANGE 30 | | 1 | | | | |
| 036 | 224559-5 | LOCK NUT 10-30 | | 1 | | | | |
| 037 | 266345-8 | TAPPING SCREW 4X80 | | 2 | | | | |
| 038 | 861251-8 | NAME PLATE 9556NB | | 1 | | | | |
| 039 | 266007-8 | TAPPING SCREW BIND PT 3X10 | | 4 | | | | |
| 040 | 643760-7 | BRUSH HOLDER | | 1 | | | | |
| 041 | 194074-2 | CARBON BRUSH CB-325 | | 1 | | | | |
| 042 | 418729-8 | SPACER | | 1 | | | | |

