



HK

HONG KONG

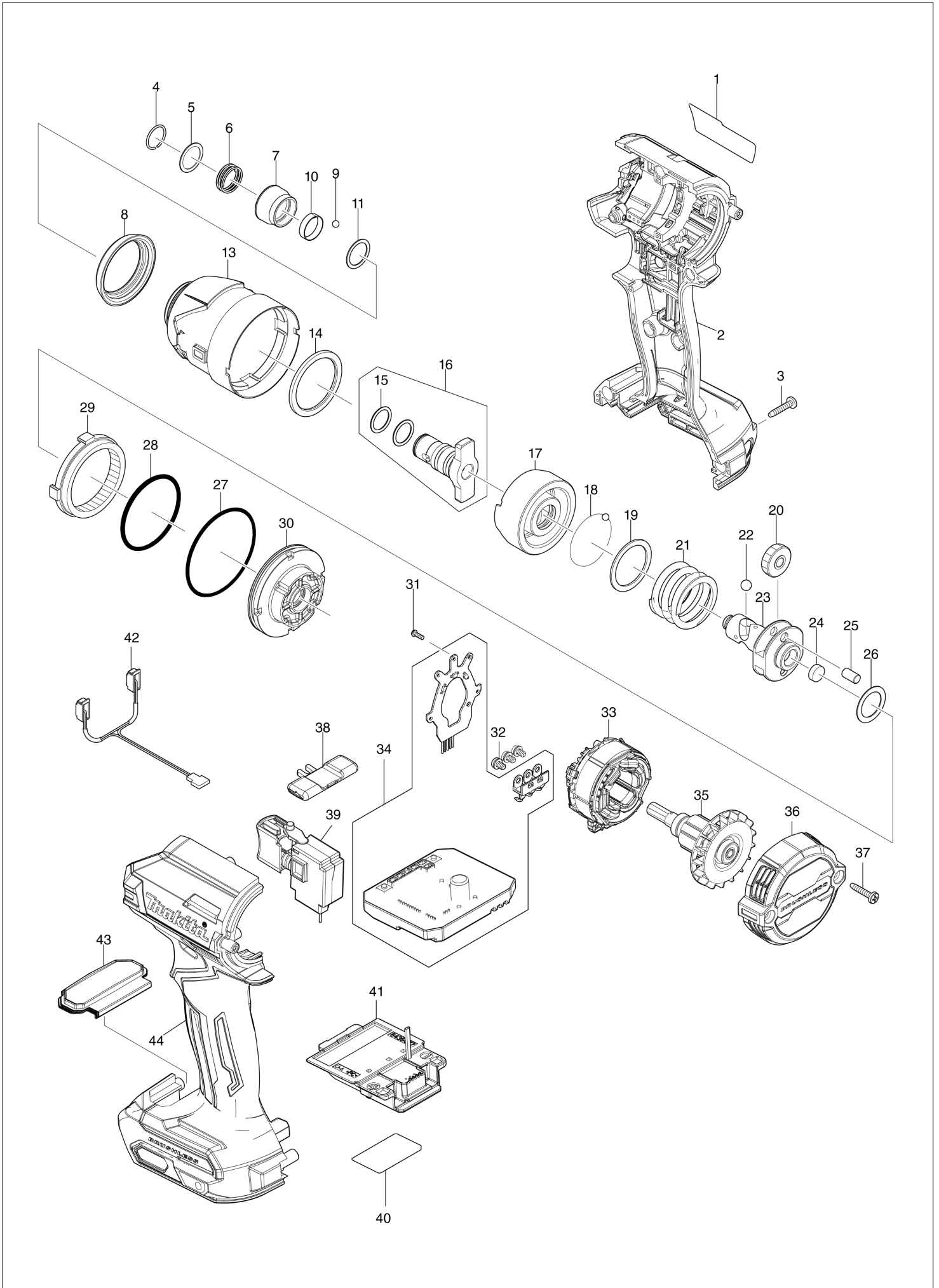
Diagram / Parts List

TD003G

CORDLESS IMPACT DRIVER



(HK) TD003G / CORDLESS IMPACT DRIVER



HK

HONG KONG

TD003G / CORDLESS IMPACT DRIVER

Item	Sub	Parts No.	Parts Description	Qty	I/C	E/C No.	Close No.	Remark
001		8586R3-8	TD003G NAME PLATE	1				
002		183X95-3	HOUSING SET	1				
	C10	263005-3	RUBBER PIN 6	2				
	C20	252126-6	HEX. LOCK NUT M4-7	2				
	C30	8007R2-2	XGT LOGO LABEL	1				
	D10		INC. 44					
003		266429-2	TAPPING SCREW 3X16	8				
004		231952-6	RING SPRING 12	1				
005		253575-0	FLAT WASHER 13	1				
006		232592-3	COMPRESSION SPRING 14	1				
007		327B23-8	BIT SLEEVE	1				
008		422A03-4	BUMPER	1				
009		216040-0	STEEL BALL 3.5	2				
010		232800-2	LEAF SPRING	1				
011		253575-0	FLAT WASHER 13	1				
013		141M85-6	HAMMER CASE COMPLETE	1				
014		261160-5	NYLON WASHER 30	1				
015		213166-9	O RING 12.5	2				
016		136854-0	ANVIL N ASS'Y	1				
	D10		INC. 15					
017		327B60-2	HAMMER	1				
018		216040-0	STEEL BALL 3.5	24				
019		267175-0	FLAT WASHER 24	1				
020		227362-3	SPUR GEAR 22	2				
021		232789-4	COMPRESSION SPRING 24	1				
022		216011-7	STEEL BALL 5.6	2				
023		327C18-7	SPINDLE	1				
024		422994-3	FELT	1				
025		256253-1	PIN 5	2				
026		267194-6	FLAT WASHER 15	1				
027		213606-7	O RING 48	1				
028		213507-9	O RING 40	1				
029		227A92-2	INTERNAL GEAR 51	1				
030		141M87-2	BEARING BOX COMPLETE	1				
031		266490-9	TAPPING SCREW PT 2X6	3				
032		652069-6	FLAT HEAD SCREW M3X6	3				
033		629C08-9	STATOR	1				
034		620L00-2	CONTROLLER	1				
035		619808-7	ROTOR	1				
036		413L86-1	REAR COVER	1				
037		266429-2	TAPPING SCREW 3X16	2				
038		455053-8	F/R CHANGE LEVER	1				
039		651442-7	SWITCH C3JR-1A-1	1				
040		8586S0-1	TD003G SERIAL NO. LABEL	1				
041		632P49-4	TERMINAL UNIT	1				
042		620B97-1	LED CIRCUIT	1				
043		141M86-4	SWITCH PLATE COMPLETE	1				
044		183X95-3	HOUSING SET	1				
	C10	263005-3	RUBBER PIN 6	2				
	C20	252126-6	HEX. LOCK NUT M4-7	2				
	C30	8007R2-2	XGT LOGO LABEL	1				
	D10		INC. 2					
A01		266622-8	+ TRUSS HEAD SCREW M4X12	1				
A02		346317-0	HOOK	1				
A03		784042-9	+BIT2-65	1				
A04Y		821550-0	CONNECTOR PLASTIC CASE (TYPE2)	1				
	C10	453974-8	LATCH	4				
A05Y		8065U1-1	TD003GA201 PLASTIC CASE LABEL	2				
A06Y		8065U2-9	TD003GA201 INDICATION LABEL	1				
A07Y		835F94-0	INNER TRAY	1				
A08Y		412393-7	BATTERY COVER	1				
A09Y		***DC40RC	DC40RC FAST CHARGER	1				
	D10		COMPO-PARTS					
A10Y		191L29-0	BATTERY BL4020 SET	2				

Y:
Z:Interchange
O : Yes
X : No
< : the new part can be substituted for the current.
> : the current part can be substituted for the new.
S : Interchangeable as a set.